



Nicola Lowther
Governance Manager
e-mail: democracy@enfield.gov.uk

ENVIRONMENT & CLIMATE ACTION SCRUTINY PANEL

**Tuesday, 17th January, 2023 at 7.00 pm in the Conference Room,
Civic Centre, Silver Street, Enfield, EN1 3XA**

Membership:

Councillor: Bektas Ozer (Chair), Chris James (Vice Chair), Hivran Dalkaya, Peter Fallart, Stephanos Ioannou, Joanne Laban, Nia Stevens and Eylem Yuruk

AGENDA – PART 1

1. WELCOME & APOLOGIES

2. DECLARATIONS OF INTEREST

Members of the Committee are invited to identify any disclosable pecuniary, other pecuniary or non-pecuniary interests relevant to the items on the agenda.

3. MINUTES OF THE PREVIOUS MEETING (Pages 1 - 4)

To approve the minutes of the meeting held on 11 October 2022.

4. THE RATIONALE AND MANAGEMENT OF PARKING ACROSS THE BOROUGH (Pages 5 - 26)

The Environment and Climate Action Scrutiny Panel is asked to note the presentation which sets out the rationale and management of parking across the Borough.

5. RE-WILDING ENFIELD CHASE (Pages 27 - 46)

Presentation to the Environment and Climate Action Scrutiny Panel to provide an update on the rewilding of Enfield Chase.

6. WORK PROGRAMME 2022/23 (Pages 47 - 48)

To note the Environment and Climate Action Scrutiny Panel Work Programme for 2022/23.

7. DATE OF NEXT MEETING

To note that the next meeting is scheduled to take place on 14 March 2023.

MINUTES OF THE MEETING OF THE ENVIRONMENT & CLIMATE ACTION SCRUTINY PANEL HELD ON TUESDAY, 11TH OCTOBER, 2022

MEMBERS: Councillors Bektas Ozer (Chair), Chris James (Vice Chair), Hivran Dalkaya, Peter Fallart, Joanne Laban, Nia Stevens, Eylem Yuruk and Tom O'Halloran

Officers: Rafe Bertram (Joint Interim Head of Climate Action & Sustainability), Tilly Ford (Sustainability Advisor), David B Taylor (Head of Traffic & Transportation), Ned Johnson (Principal Officer Pollution), Suzanne Connolly (Governance Officer)

Also Attending: Cllr Ergin Erbil (Deputy Leader), Cllr Rick Jewell (Cabinet Member for Environment), 2x members of public

1. WELCOME & APOLOGIES

Due to the late arrival of the Chair, Cllr Bektas Ozer, the Vice Chair, Cllr Chris James, started the meeting.

Apologies for absence were received from Cllr Stephanos Ioannou, who was substituted by Cllr Tom O'Halloran.

2. DECLARATIONS OF INTEREST

There were no declarations of interest registered in respect of any items on the agenda.

3. MINUTES OF THE PREVIOUS MEETING

AGREED the minutes of the previous meeting held on 7 July 2022.

4. CLIMATE ACTION PLAN REVIEW

Rafe Bertram, Joint Interim Head of Climate Action & Sustainability, and Tilly Ford, Sustainability Advisor, introduced the report highlighting the key points and updates on progress during 2021/22.

In response, members thanked officers for the report and commented as follows:

1. Cllr Laban asked about the option of bringing back meat to the council menu, which could support small local business such as farms. Officers took these comments on board.

ENVIRONMENT & CLIMATE ACTION SCRUTINY PANEL - 11.10.2022

2. Recycling rates were below target and members were concerned about the ability to meet future targets. Cllr Jewell said there were projects in place, including talks with North London Waste.
3. Concerns were raised about the cost of living crisis and fuel poverty. Officers were trialling options however it was not a quick fix. Work was taking place with Energetics and prices would be lower and give greater personal control of energy.
4. Questions were asked about the location of electric roadside charging points, to which Cllr Jewell advised that ones on lampposts would need to be on the curb. Some would be rapid charging. The Manifesto pledge of 1000 more charging points was to provide an adequate supply, not an oversupply. Work was being carried out with communities and energy suppliers.
5. A discussion took place around domestic gas and social housing which had been slightly delayed. **ACTION** Tilly Ford to check on this. There was a workstream to look at this and various models were being considered.
6. Members agreed there should be more promotion around food habits and the environmental impact. Cllr Erbil advised there was focussed engagement taking place with businesses, as well as work in libraries and town centres to engage the public.
7. Cllr Fallart asked about the potential use of green hydrogen. Officers were unsure and would take this away to discuss with Fleet Services **ACTION** for David Taylor. Cllr Jewell highlighted the success of electric refuse vehicles in the borough.
8. It was noted that the target of planting 100,000 trees had been achieved.
9. Cllr Laban asked when the Council's fleet would be zero emissions. Officers stated the requirement was by 2030. **ACTION** for David Taylor to check on progress to date.
10. Cllr Laban would like the support of farming to be added to the action plan. Cllr Erbil understood the importance of agricultural land and would pass this to the relevant team. **ACTION** for Cllr Erbil.

5. PROPOSED ULEZ EXPANSION FOR 2023

Cllr Bektas Ozer took back the role of Chair from this item onwards.

Ned Johnson, Principal Officer Pollution, was in attendance for this item.

The Council's response to the ULEZ proposal was supportive in principal however there were some concerns over the scrappage scheme, the timescales and costs, and operational issues. The Mayor was due to respond to the consultation towards the end of the year.

In response members commented as follows:

ENVIRONMENT & CLIMATE ACTION SCRUTINY PANEL - 11.10.2022

1. Cllr Laban queried the level of benefits to air quality for outer London which were not as high as for inner London. Cllr Jewell believed this was being considered by the Greater London Authority (GLA).
2. Cllr Stevens expressed support for the expansion however felt the impact was not significant and questioned if there were other ways to help improve air quality. Officers said they were promoting active travel and engaging with Transport for London (TFL) regarding public transport. More detail could be found in the Air Quality Action Plan.
3. There were queries as to why Bullsmoor Lane was not included in the ULEZ expansion. Officers had looked into this and the reasoning was that vehicles would already come in or go out of a ULEZ zone on their journey, plus there had to be an “exit route” to allow vehicles to avoid the ULEZ.
4. Cllr Laban asked about zero emission buses. Cllr Erbil would be raising this with TFL.

Cabinet members and officers were thanked for their work and input on this item.

6. WORK PROGRAMME 2022/23

NOTED the work programme for 2022/23.

Members agreed to add an item on “Air Quality Action Plan” to the March meeting. **ACTION** Officers to include a map detailing the air quality variations across the borough.

7. DATE OF NEXT MEETING

NOTED the dates of future meetings as follows:

Tuesday 17 January 2023

Tuesday 14 March 2023

All meetings commence at 7pm.

The meeting ended at Time Not Specified.

This page is intentionally left blank

Environment & Climate Action Scrutiny Panel

The rationale and management of parking across the Borough

Page 5

Agenda Item 4

The rationale and management of parking across the Borough

- Current policy
- Legal framework
- Car ownership
- On-street controls
- Controlled parking zones
- Car Parks

Policy Framework

London Plan

Various policies to encourage shift to sustainable travel. The Plan makes it clear that low or car free development should be the norm and setting lower maximum car parking standards for new developments.

THE LONDON PLAN



THE SPATIAL DEVELOPMENT
STRATEGY FOR GREATER LONDON
MARCH 2021

Page 7

Local Plan

Supports LP maximum standards

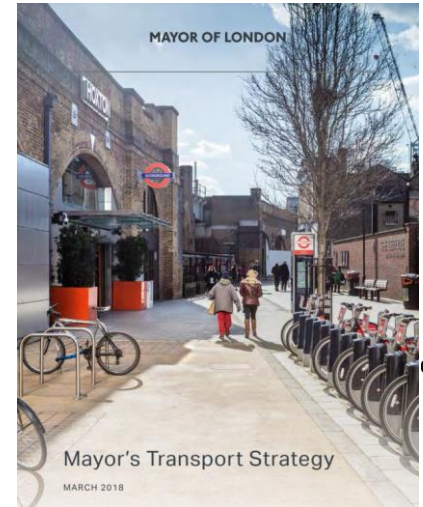


Policy Framework

Mayor's Transport Strategy

Overarching aim for 80% of all trips in London to be made on foot, by cycle or using public transport by 2041.

Management of parking recognised as key policy lever that can influence mode choice.



Policy Framework

Enfield Transport Plan

Focus on encouraging sustainable and active travel. Key objective to:

‘Manage growing demand for on-street parking, recognising that there is simply not enough road space to safely and efficiently accommodate everyone who wishes to park or drive in’.

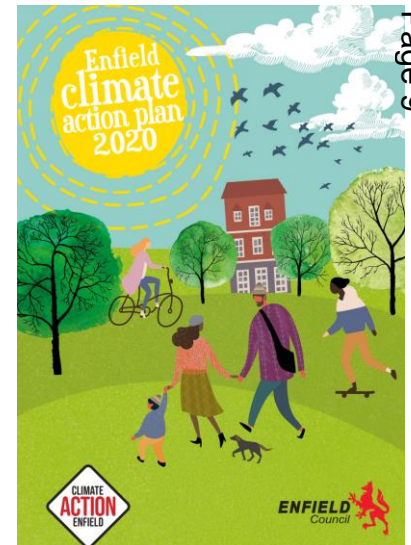
Climate Action Plan

Actions include:

Limit the provision of car parking spaces on new developments in line with the New London Plan and better manage existing kerbside space.

The London Borough of
Enfield Transport Plan 2019
Including the Third
Local Implementation Plan

www.enfield.gov.uk



Page 9



Policy Framework

Air Quality Action Plan

Priorities include:

- make active travel the natural choice, particularly for those trips less than 2km (1.2 miles)
- make more school trips safe, sustainable and healthy
- reduce the impact of private vehicles on our streets (through a reduction in emissions)
- make the public transport network more accessible and the natural choice for longer trips

These priorities are supported by a number of actions, including by '***managing growing demand for on-street parking***'.

Parking Links



Legal Framework

Road Traffic Regulation Act 1984

Provides powers to regulate traffic and parking, introduce parking bays and charges etc.

- Section 55: requirement to keep accounts of income/expenditure and limits use of any surplus.
- Section 122: requirement to secure the expeditious, convenient and safe movement of vehicular and other .. and the provision of adequate parking facilities on and off the highway.

Legal Framework

Traffic Management Act 2004

- The provisions in Part 6 of the TMA 2004 provide powers to introduce a new framework for the enforcement of parking, bus lanes, certain moving traffic matters and the London lorry ban.
- Part 6 builds on and strengthens the successful civil enforcement regime introduced by the Road Traffic Act 1991, the Transport Act 2000 and existing London specific legislation.

Legal Framework

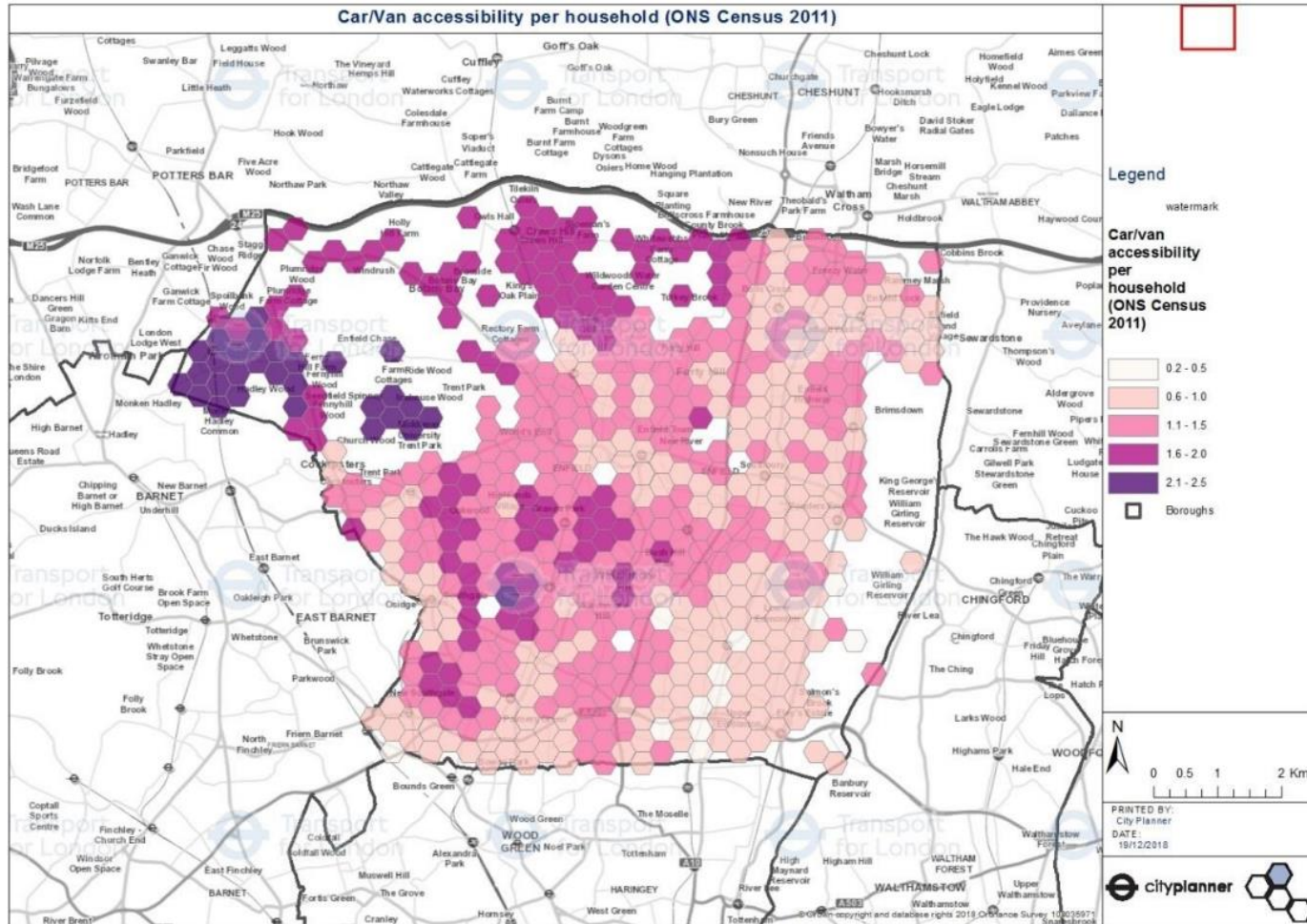
Traffic Management Act 2004 - S16

Places a network management duty on traffic authorities:

To manage the road network .. as far as reasonable practicable ... having regard to others obligations, policies and objectives ... the expeditious movement of traffic...

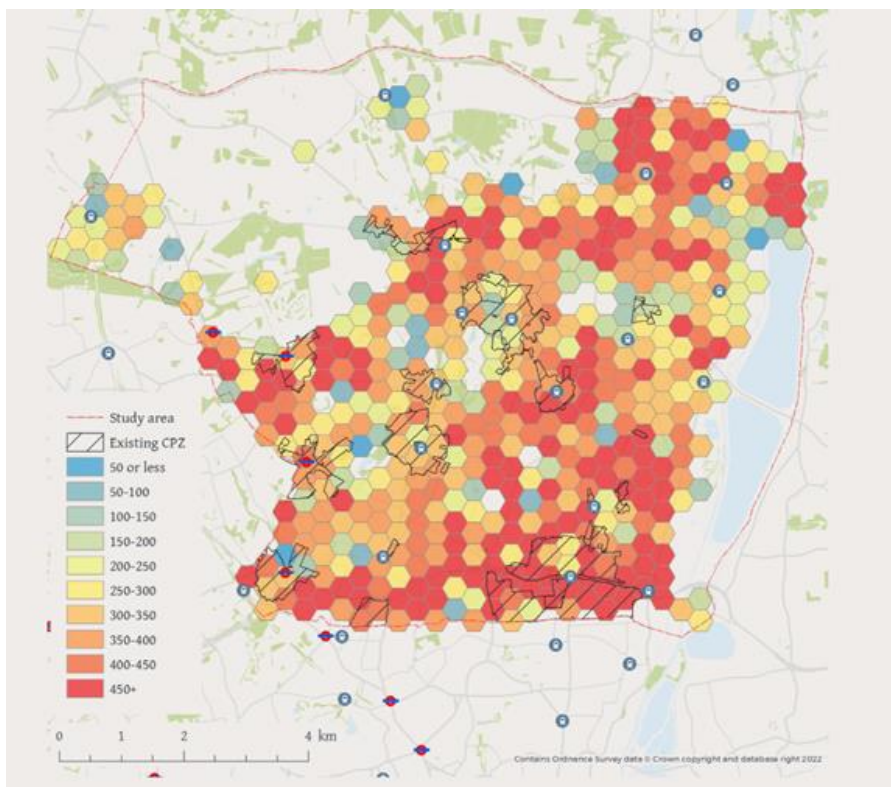
Statutory Guidance emphasises the role that managing and enforcing parking can play in helping meet this duty.

Car Ownership

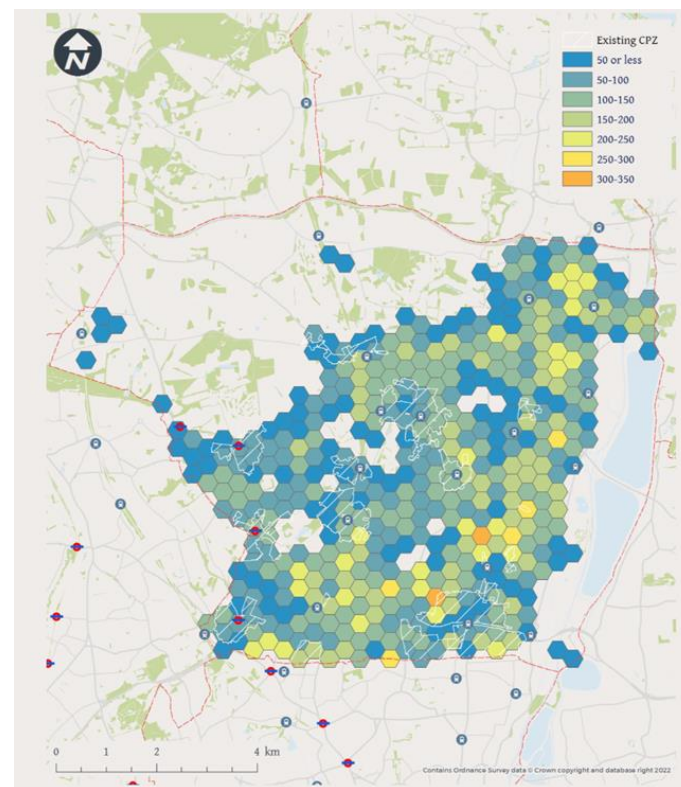


Car Ownership

Density of cars



Reliance on On-Street Parking

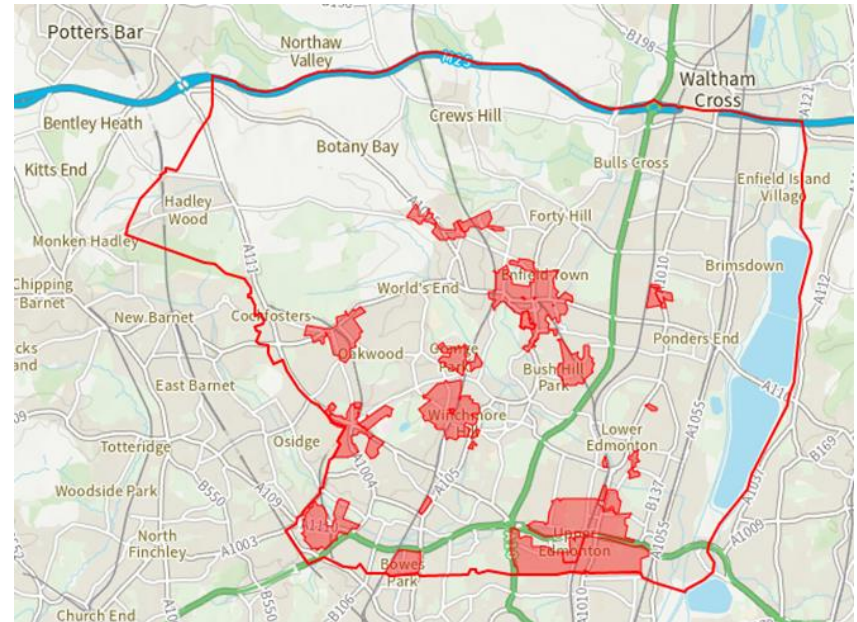


On-Street Controls

- Majority of roads in the Borough are uncontrolled – c.75%
- Restrictions concentrated on main roads and in town centres
- Pay and Display in town centres
- 24 CPZs

Current CPZs

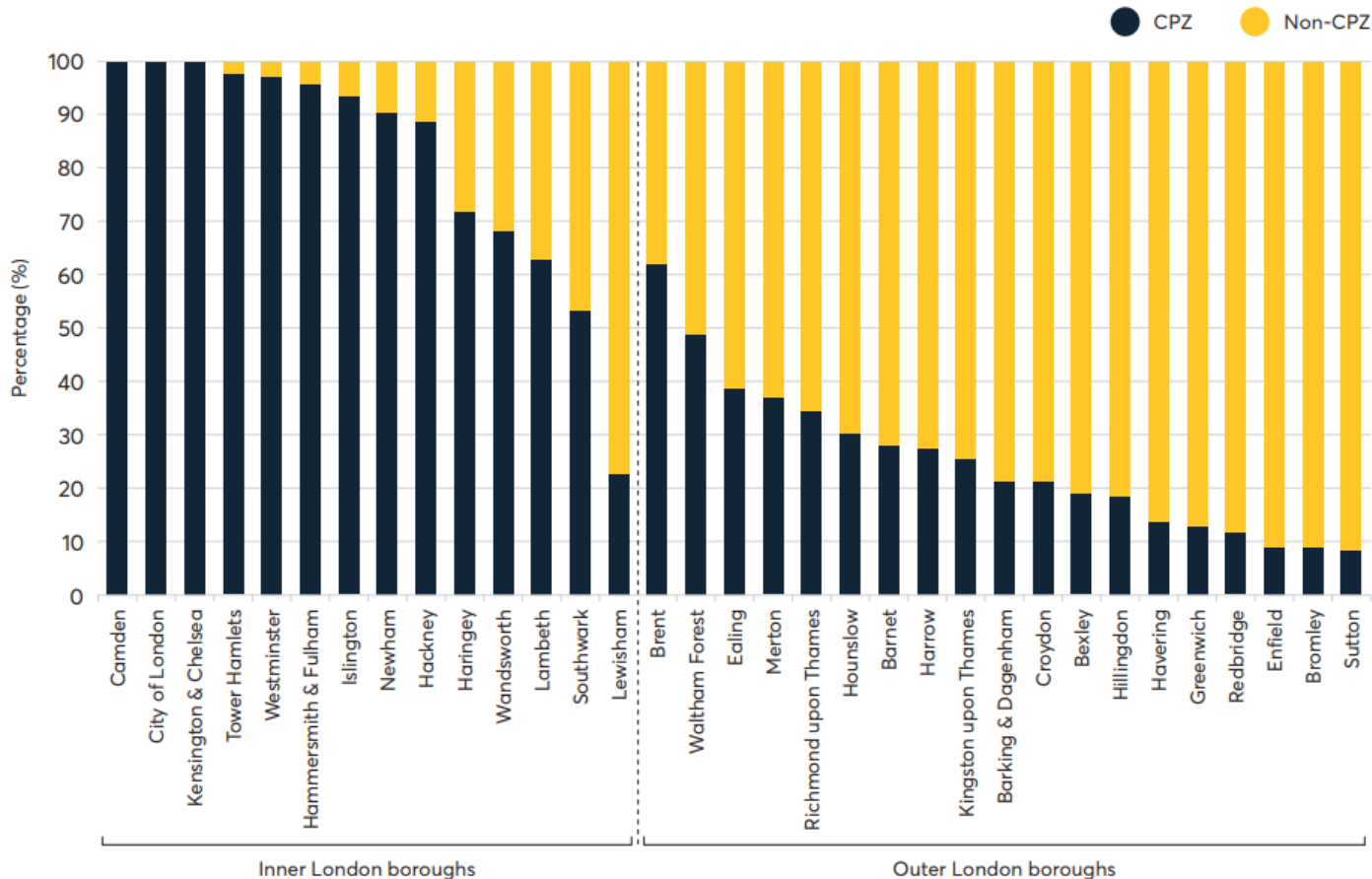
- Permit parking
 - CPZ; RPZ; PPA
- Wide range of operational hours, with mix of 'All-Day' and 'Part-Day' controls.
- Reactive approach



CPZ Coverage

Low CPZ coverage in Enfield compared to other boroughs

Figure 7: Proportion of kerb space covered by Controlled Parking Zones, by borough



CPZ Pros & Cons

Some Advantages

- Prevents all-day commuter parking
- Improves access for vehicles especially emergency service and refuse vehicles
- Improves highway safety and reduces inconsiderate and indiscriminate parking
- Reduces number of vehicles circulating the area looking for parking space, leading to a reduction in congestion, noise and air pollution
- Generally, improves parking conditions for the community
- Permit pricing can encourage the use of vehicles that produce lower emissions
- Can facilitate higher density 'car lite' or car free housing whilst protecting the amenity of existing residents

CPZ Pros & Cons

- **Some disadvantages**

- Possible displacement of parking to nearby uncontrolled roads
- Having to pay for a parking permit
- Additional posts and signs can add to street clutter
- Can nominally reduce on-street parking space by removing parking from corners and pinch-points
- Does not guarantee a parking space to permit holders
- Might encourage more to convert front gardens to parking areas

Current Approach to CPZs

To only to investigate the introduction of a CPZ:

- Where a CPZ is supported by the majority of people living in an area suffering from high levels of parking stress.
- Where a CPZ has been identified as a necessary measure to protect residents from overspill parking from a new development.
- Where on-street parking need to be managed in the interests of either road safety or the free flow of traffic.

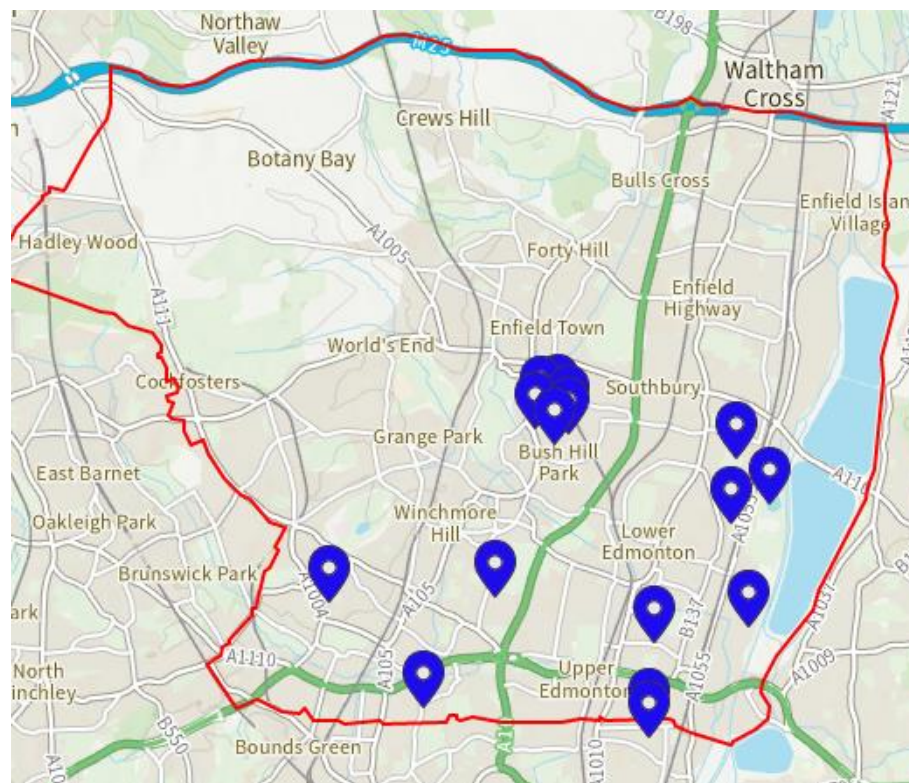
CPZ Permit Prices

	Engine Size	First Permit per person	Second & Third Permit per person
Residents' all day permits (over 4 hours)	1000cc or less + electric vehicles	£77	£95
	1001cc-1600cc	£155	£195
	1601cc-1999cc	£230	£290
	2000cc or more	£395	£495
Visitor permits	£21.00 for 10 half-day vouchers		
Business permits	£230 for 3 months	£920 for 1 year	

	Engine Size	First Permit per person	Second & Third Permit per person
Residents' part-day permits (under 4 hours)	1000cc or less + electric vehicles	£38.50	£47.50
	1001cc-1600cc	£77.50	£97.50
	1601cc-1999cc	£115	£145
	2000cc or more	£197.50	£249
Visitor permits	£10.50 for 10 vouchers		
Business permits	£85 for 1 year		

Car Parks

- **LITTLE PARK GARDENS - 99**
- **NEW RIVER LOOP - 46**
- **GENOTIN ROAD - 96**
- **CHURCH LANE - 16**
- **SYDNEY RD (SMALL) - 68**
- **LODGE DRIVE - 151**
- **MINCHENDEN - 100**
- **LION ROAD - 19**
- **FAIRFIELD RD - 27**
- **RAYNHAM - 53**
- **EAGLE HOUSE - 26**
- **BOUNDARY HOUSE - 9**
- **FORDS GROVE - 72**
- **PALACE GARDENS - 523**
- **GLYN ROAD – 84**
- **TURKEY STREET - 34**



Enfield Car Park Charges

	Enfield Town Car Park Charges	Outer Enfield Car Park Charges
Mon-Sat	Up to 1 hour: £1.40 1-3 hours: £2.80 3-5 hours: £5 Over 5 hours: £8	Up to 1 hour: £1.20 1-3 hours: £2.40 3-5 hours: £4 Over 5 hours: £6
Sun	Up to 3 hours: Free 3-5 hours: £5 Over 5 hours: £8	Free

This page is intentionally left blank

Rewilding Enfield Chase

Environment and Climate Action Scrutiny Panel

Tuesday 17th January 2023



Rewilding Enfield Chase



Key benefits

- Habitat creation
- Public health and wellbeing
- Heritage – landscape restoration
- Flood risk reduction
- Carbon capture

Rewilding Enfield Chase Vision

- Restore the natural landscape of Enfield Chase for the benefit of people and wildlife
- Create a mosaic habitat of woodland, grassland and wetlands with improved access
- Diversify and strengthen the rural economy



Rewilding Enfield Chase Multiple Benefits

- Enhanced biodiversity – restoring ecological processes
- Health and wellbeing – access to nature leads to improved mental and physical health
- Air quality – greening helps to improve air quality by capturing particulates and encouraging active transport
- Climate – mitigating the impact and adapting to climate change
- Water – reducing the impacts of flooding, pollution and drought





Enfield Chase farming today



Enfield Chase wood pasture



River restoration



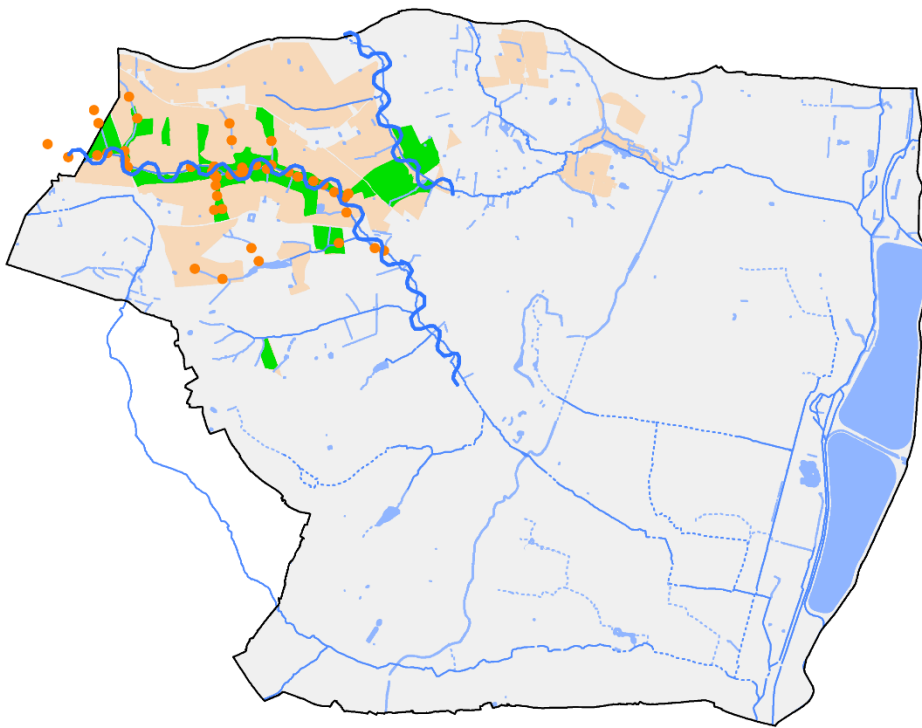
Wetlands



Woodland creation

Natural Flood Management measures include:

- River restoration
- Re-connecting floodplains
- Ponds and wetlands
- Woodland creation



ENFIELD CHASE RESTORATION MAP



PROPOSED WOODLAND

EXISTING WOODLAND

GREEN SPACE

FARMLAND

URBAN AREA

LONDON LOOP

SUPPORTED BY
MAYOR OF LONDON

Forestry Commission

THAMES21

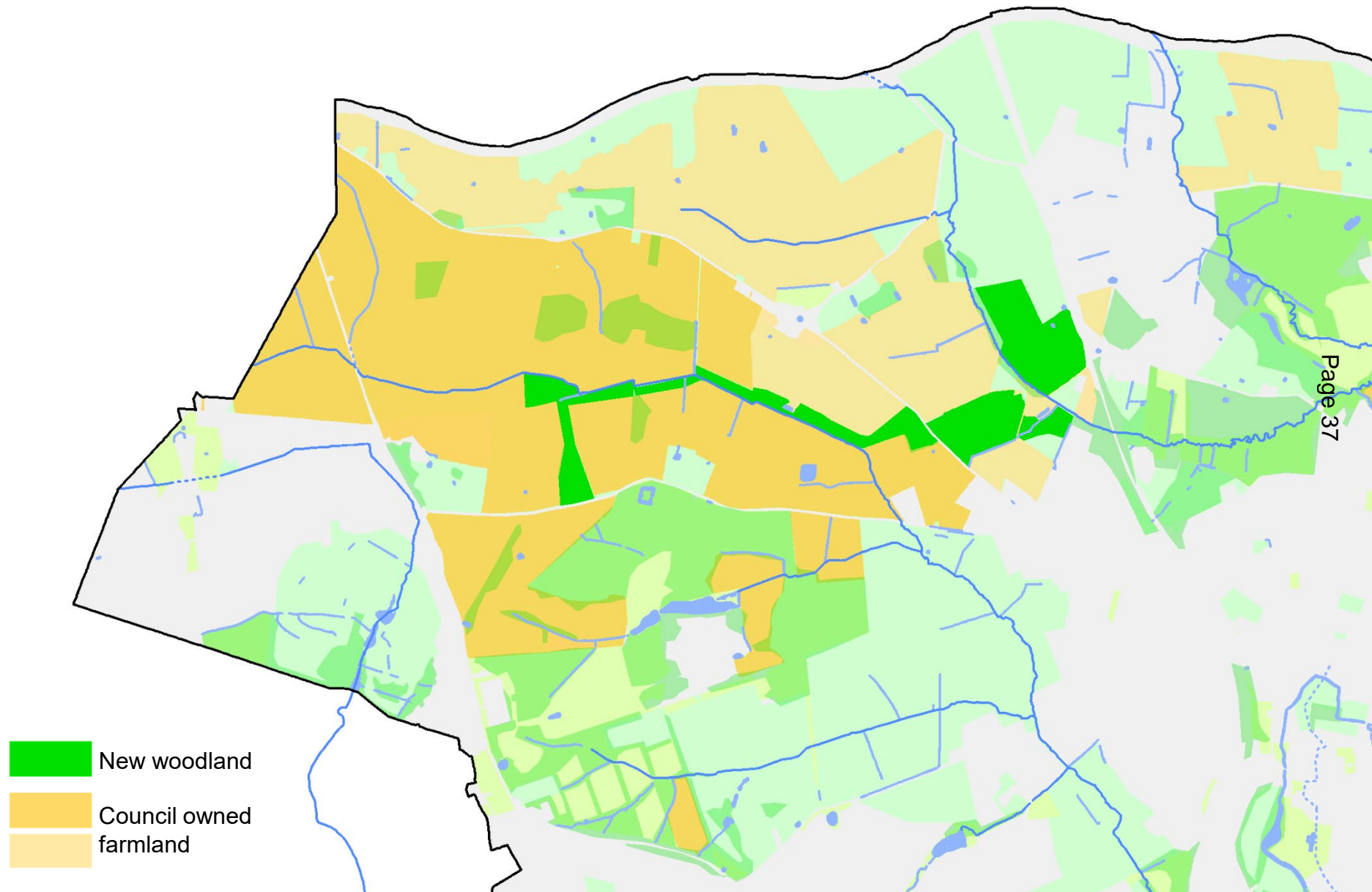
CLIMATE ACTION ENFIELD

ENFIELD
Council



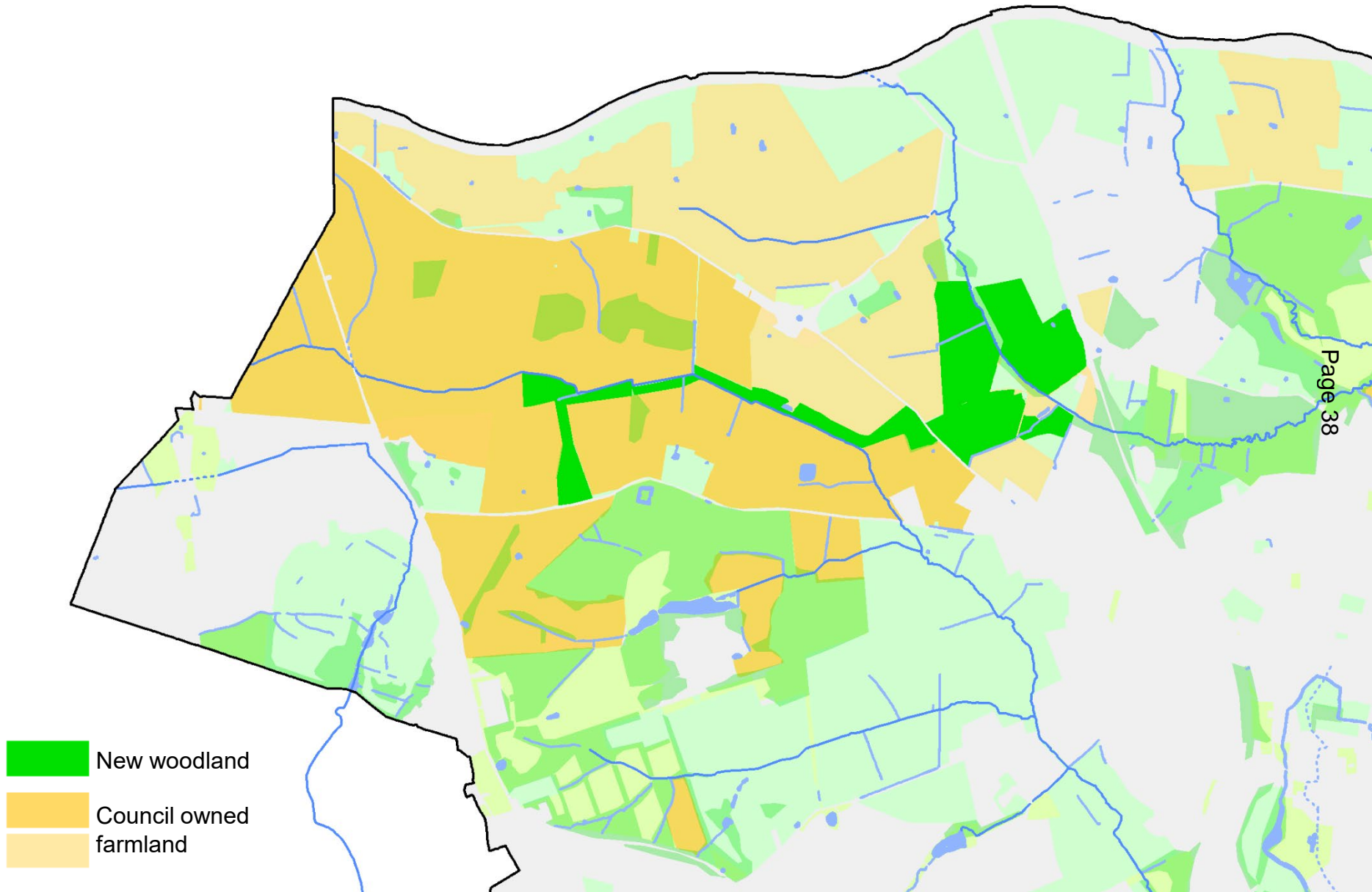
Years 1-2 2020-22

- 100,000 trees planted over 60 hectares



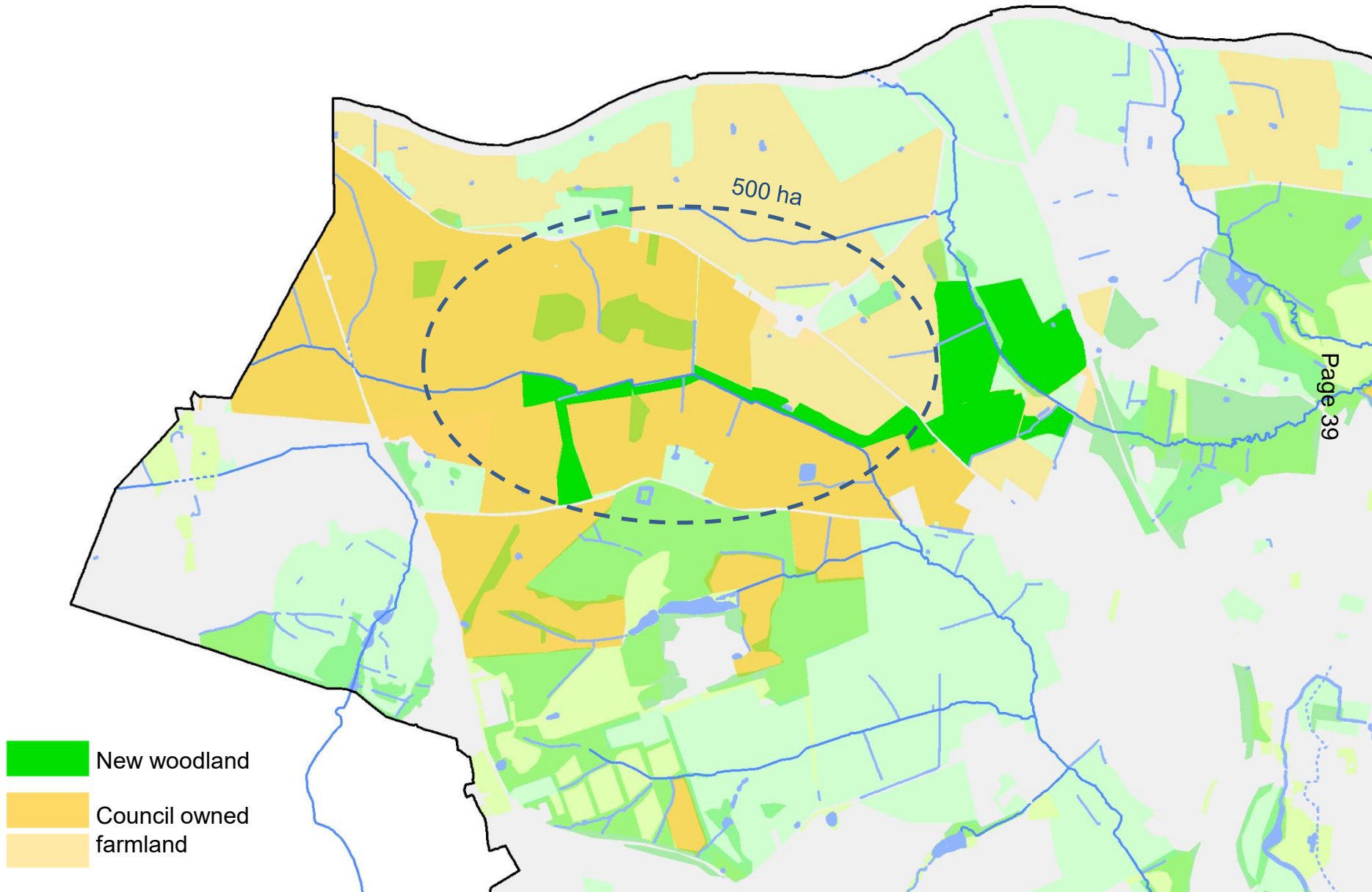
Year 3 2022/23

- Planting 34,000 trees across 20 hectares



Future Years 2024 and beyond

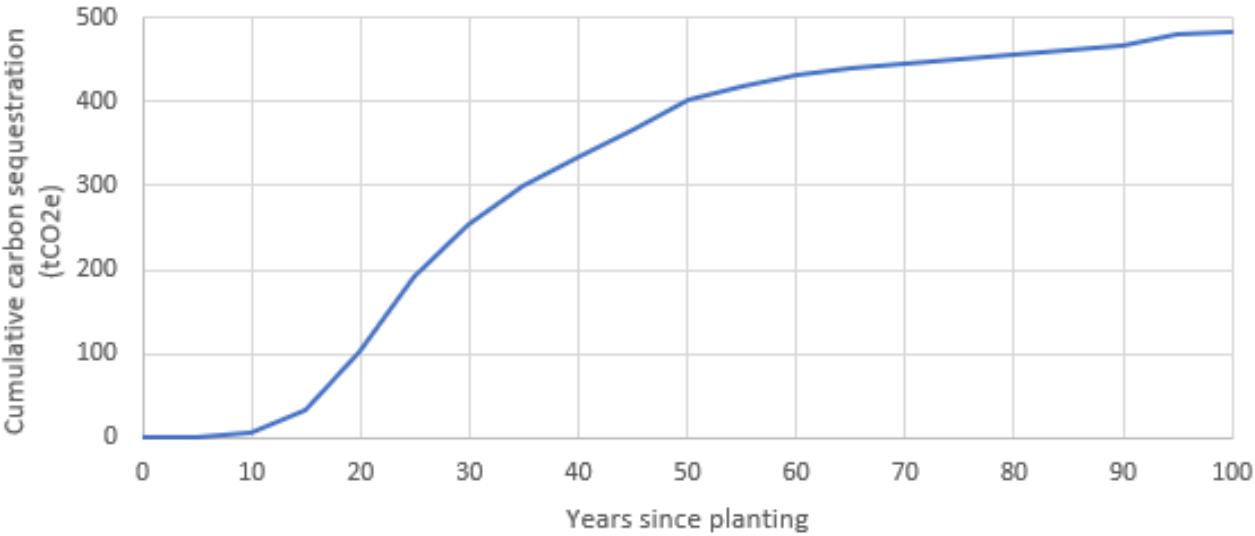
- Planting 1 million trees would require 500 hectares



Carbon Capture

- Woodland creation, together with other forms of rewilding and landscape restoration, has significant potential to help achieve Enfield Council’s aim of becoming carbon neutral by 2030
- Enfield’s **Climate Action Plan** estimates by 2030, following direct action to reduce emissions, there will still be a potential gap of **585 tCO₂e** (tonnes of carbon dioxide equivalent emissions) per year between the emissions the Council continues to produce and the target of zero
- Using a conservative estimate for carbon sequestration of 5.6 tCO₂e/ha/year, estimates of carbon capture can be made for the Enfield Chase woodland creation project

Woodland Creation Targets	Year	Estimate Carbon tCO ₂ e/year
80 ha (current proposals)	2023	448
140 ha (Climate Action Plan)	2025	784
500 ha (estimated area required to plant 1 million trees)	2030	2,800



Estimated cumulative carbon sequestration for a typical single hectare of woodland over 100 years
(www.woodlandcarboncode.org.uk)

Proposed Urban Tree Planting in 2022-23 (potential tree numbers in brackets)

- Hoe Green (1,000)
- Durants Park (4,000)
- Deli Gardens (600)
- Tottenham Rec (1,200)
- Albany Park (2,000)
- Prince of Wales Open Space (1,000)
- Alma Recreation Ground (3,600)
- Jubilee Park (1,100)
- Oakthorpe School (1,100)
- Bury Lodge Gardens (600)





Forty Hall Estate Beaver reintroduction



Page 43

Forty Hall Estate Beaver reintroduction



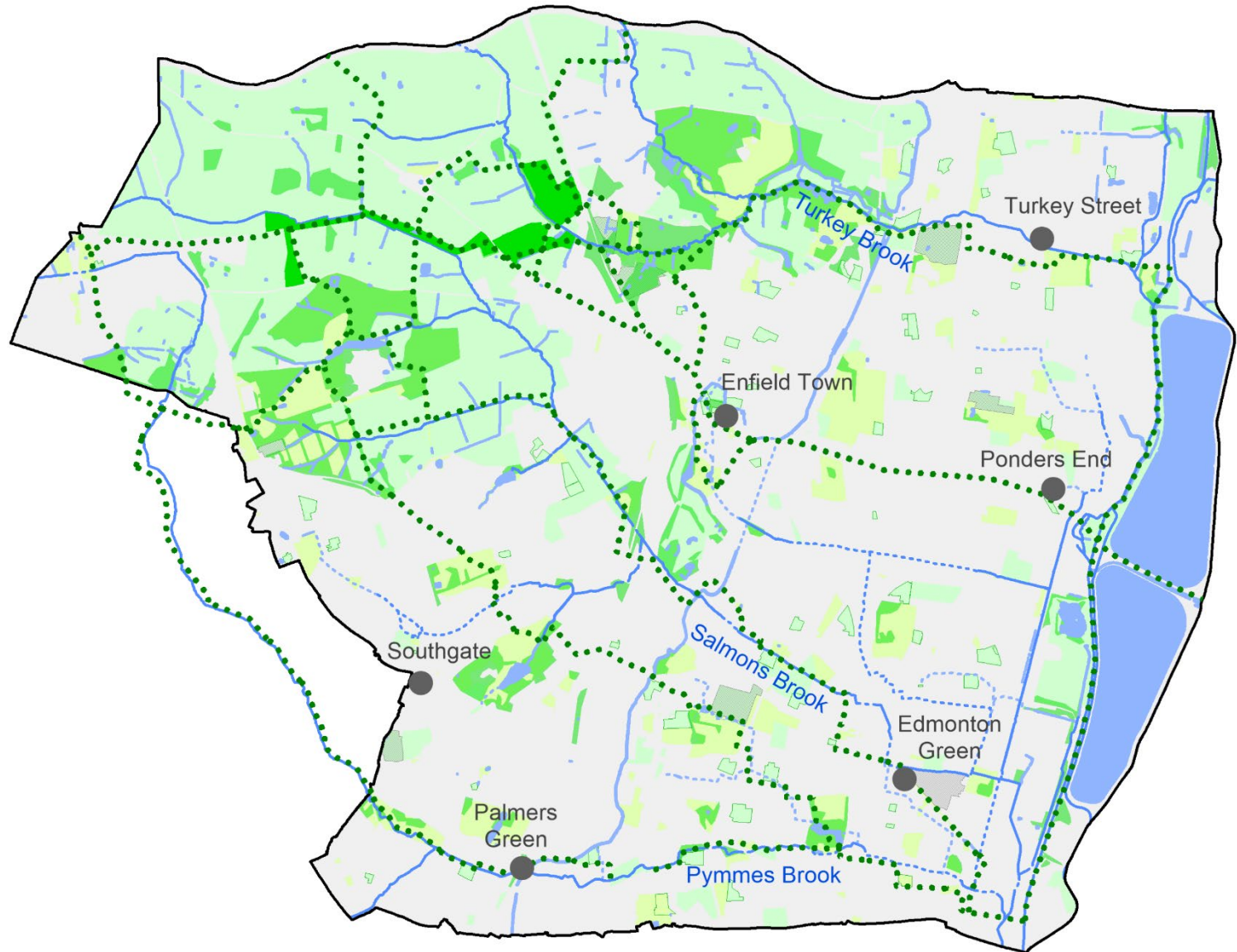
Forty Hall Estate Beaver reintroduction

Urban Rewilding Strategic context

- **Blue and Green Strategy** – includes aim to create wilder, more natural spaces to enable biodiversity to thrive, support the restoration of ecosystems and increase interest among people
- **Climate Action Plan** – vision states that by 2030, we will have a natural environment that enhances biodiversity, provides significant protection against flooding and which helps to mitigate overheating in London. By 2040 we will have achieved a net increase in green infrastructure of 25% compared to today
- **Local Plan** – strategic objectives include delivering green infrastructure improvements, including accessible new woodland, rewilded river corridors and new parks and open spaces to support growth
- **Council Plan** – draft priority actions include enhancing and protecting Enfield's parks, open spaces, woodlands, watercourses, wetlands, trees and shrubs

Urban Rewilding Spatial context

- Proposed sustainable transport links



Environment & Climate Action Scrutiny Panel Work Programme

Date of meeting	Topic	Lead officer	Lead Members	Executive Director/ Director	Reason for proposal	Other Committee/ Cabinet/ Council approvals?
7 July 2022	Work Planning					
11 October 2022	Climate Action Plan Review	Rafe Bertram/Tilly Ford	Cllr Ergin Erbil	Doug Wilkinson	The Plan is being refreshed following the election.	Council
	Proposed ULEZ expansion for 2023	David Taylor	Cllr Jewell	Doug Wilkinson	This was proposed as it will affect Enfield residents directly and Enfield will be expected to respond to the Consultation.	
17 January 2023	Parking Strategy – This will come to the Panel for information	David Morris	Cllr Jewell	Doug Wilkinson	This was highlighted as a priority during the work planning meeting.	
	Parks & Wetlands looking at rewilding and the number of trees planted	Ian Russell	Cllr Ergin Erbil/Cllr Anyanwu	Doug Wilkinson	This was highlighted as a priority during the meeting by the Cabinet Member.	
14 March 2023	Review the implementation of School Streets	Richard Eason	Cllr Jewell	Doug Wilkinson	This was highlighted as a priority during the meeting by the Cabinet Member.	
	Waste Recycling Management Performance	Jon Sharkey	Cllr Jewell	Doug Wilkinson	This was highlighted as a priority during the meeting by the Cabinet Member.	
	Air Quality Action Plan	Rafe Bertram/Tilly	Cllr Jewell	Doug Wilkinson	Following discussions on the Climate Action Plan,	

Environment & Climate Action Scrutiny Panel Work Programme

		Ford			members would like to look at this in more detail. 2022-10.11 ECASP mtg Officers to include a map detailing the air quality variations across the borough.	